

# Margaret Greenham Theatre

## Stage Dimensions

Width: 46' 0" Max

Height: 17' 6" to Grid

Depth: 35' 0"

---

## Stage Goods

Fixed Black Velour Masking 26 @ 4' x 16'

Flats: 2 @ 5' x 16'

1 @ 3' x 16'

2 @ 2' x 16'

1 @ 14" x 16'

1 @ 12" x 16'

White (plastic) cyclorama

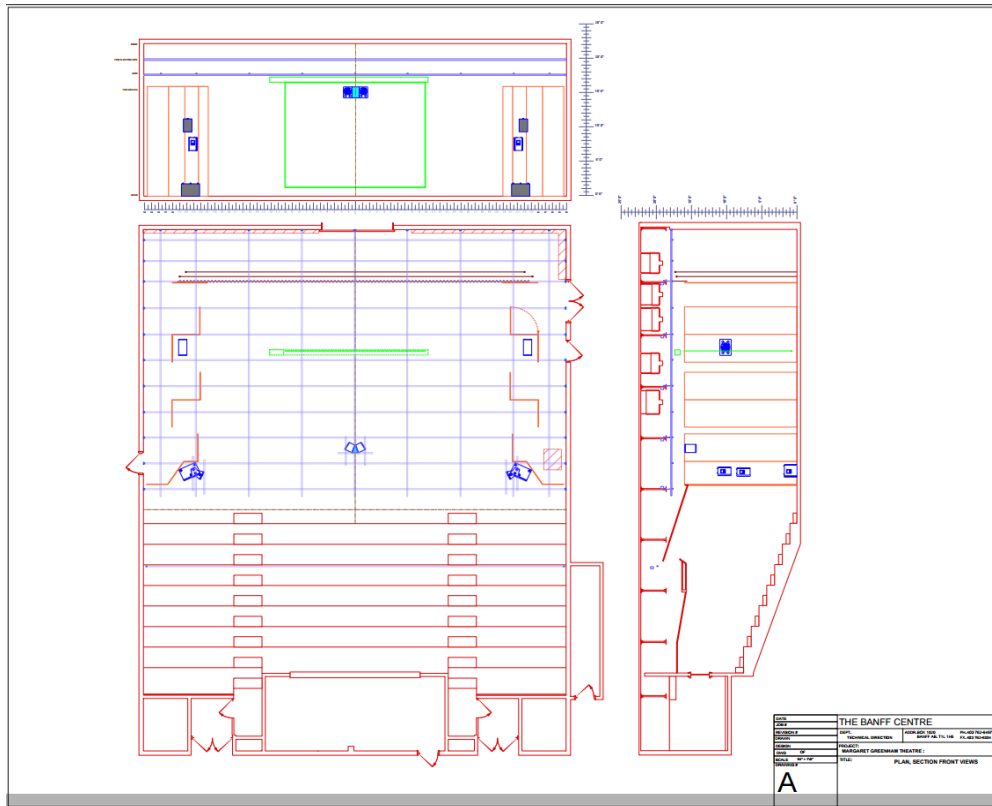
Upstage black scrim

Upstage black velour traveler

Optional - Black RP screen to replace white cyclorama

---

## Scale Plan and Section



[View full size 1/4" = 1"-0" PDF](#) (or right-click [on the link](#) to download file)

Electronic or hard-copy drawings of Theatre Complex performance spaces, repertory lighting plots and line plots are available by contacting: [murray\\_palmer@banffcentre.ca](mailto:murray_palmer@banffcentre.ca)

## Lighting

Lighting Control System: Neo console with 4 universe of 512 DMX outputs..

Dimming: ColorTran D192, dimmer-per-circuit

Dimmers: 192 @ 2.4K

## INSTRUMENT INVENTORY

INSTRUMENTS		Quantity	Field Angle
ETC	Source 4 Fixture Body	53	
ETC	Source 4 Lens Tube: 26°	14	26°
ETC	Source 4 Lens Tube: 36°	23	36°
ETC	Source 4 Lens Tube: 50°	16	50°

Strand	6" 1kw Axial LEKO Body*	18	
Strand	6" 1kw Axial LEKO Body (w/iris)	19	
Strand	3.5x5 500W Leko (Patt 23/23w	1	
Strand	Lens Tube: 6x9	24	36°
Strand	6" 1kw Fresnel (3380)	30	13°-15°
Colortra	4-cell 1kw Cyc Light	10	
Century	14" 500w scoop	1	
Vari*lite	VL-1000TS	4	19°-70°

---

## Sound

### LOCATION:

BOOTH — rear of auditorium with sliding window

HOUSE MIX POSITION — rear of audience area centre

### MIXING CONSOLE:

Yamaha DM2000

Permanently installed in booth

### TAPE MACHINES/PLAYBACK:

- 1 Tascam CD 160 Player

### BOOTH MONITORS:

- Tannoy PBM 8 with Bryston 3B power

### INSTALLED SPEAKERS: (central cluster)

- 2 Tannoy CPA 12 Speakers w/Bryston 4B Power

### Left & Right Mains

- 2 Meyer UPA1C and 1 USW per side, crest powered

### INTERCOM SYSTEM:

Master Station: Location - D.S.R.

Type: Clear Com.

12 locations within the theatre

Please confirm what is available for your show with:

Murray Palmer, Technical Director

. (403) 762-6479 or e-mail [murray\\_palmer@banffcentre.ca](mailto:murray_palmer@banffcentre.ca)